

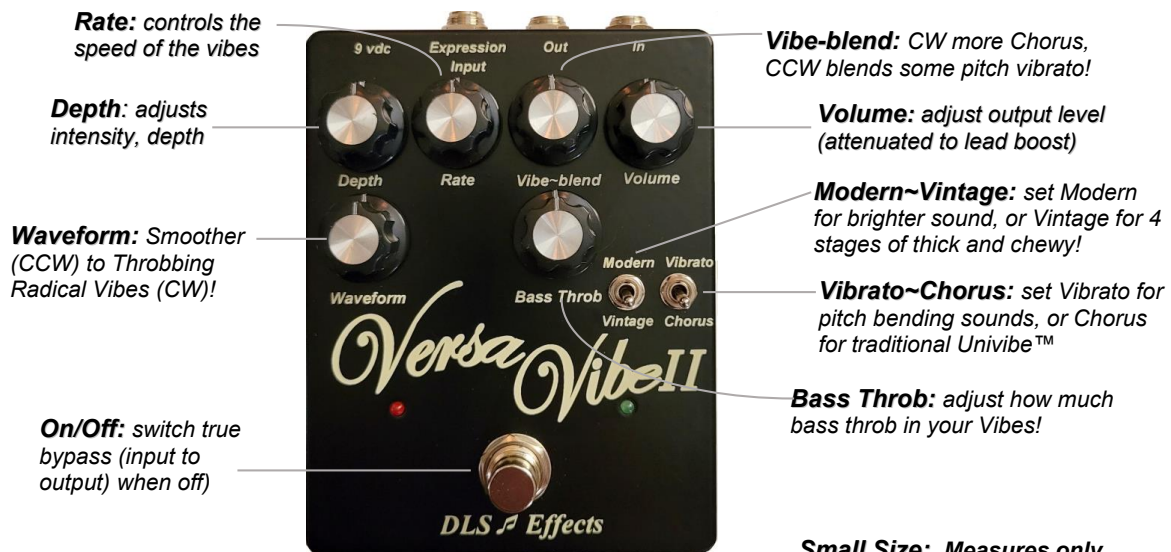
Versa Vibe II

DLS  Effects

Welcome to the pure Opto-Analog *Versa Vibe-II* by DLS Effects! The *Versa Vibe-II* is based on vintage *Optical Technology* and offers adjustable *Bass Throb*, *Vibe-blend*, and *Waveform* to dial in any Vibe sound imaginable! Get those vintage Univibe™ sounds along with the most versatility of any product on the market today!

Switch between *Chorus* for those Trower, Hendrix, Gilmour sounds, or *Vibrato* for pitch bending *Vibes*. The *Vintage* setting achieves fatter-deeper effect & tones, while the *Modern* setting is slightly brighter.

An internal charge pump circuit increases the analog voltage to achieve warmth with higher headroom. The *Expression* pedal input jack accommodates rate control with an external foot pedal. True switch bypass and a non-polarity 9vdc input jack puts the *Versa Vibe-II* over the top!

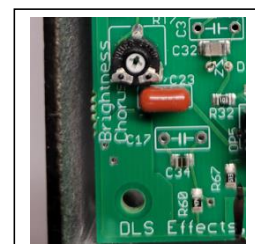


Versa Vibe Features:

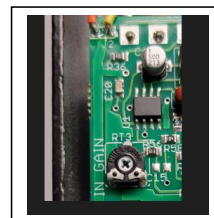
- All analog circuitry!
- **Optical Analog Technology** produces extremely *warm* sounds with *versatility*.
- **Waveform:** Controls the personality of the vibes from smooth to abrupt
- **Vibe-Blend:** when Chorus selected, CW is more Chorus, CCW blends some pitch bend Vibrato
- **Bass Throb:** Adjusts how much bass throb from mild to heavy bass throbs
- **Depth:** Controls the depth of the Vibes
- **Rate:** Controls the speed
- **Red LED:** blinks at the Versa Vibe-II rate
- **Modern~Vintage:** set for brighter Modern sound, or Vintage for thick & chewy!
- **Vibrato~Chorus:** set Vibrato for pitch bend vibrato, or Chorus for Univite™
- **Output Volume:** Volume output on OUTA (from attenuated to boost levels for leads)
- **Internal Brightness Pot:** Adjust brighter CW, or darker Chorus Vibes CCW
- **On/Off LED:** Green LED lit when the effect is engaged

Brightness Pot

Clockwise= Brighter
(factory set: from full CCW, rotate 2/3 turn Clockwise).



- **On/Off Switch:** Engages the effect when ON, Switched bypass when OFF.
- **INA jack:** ¼" jack, instrument Input
- **OUTA jack:** ¼" jack Output to amplifier or next effect input
- **Expression Input:** ¼" Expression pedal input to control Rate (recommended Yamaha FC-7, Roland EV-5, Boss)
- **Internal IN GAIN Pot:** Adjusts the input gain level of Input A
- **9vdc input:** 2.1mm jack, any polarity for worry free 9v to 12v pedal board supplies (Input current is 30ma min at 9vdc)
- **Internal charge pump:** increases voltage for pure warm analog with head room
- **Small, light aluminum enclosure:** measures 3.7"W x 4.7"L x 1.7"H weight of 1.6lbs
- **Powder coated paint** (more durable than standard painting)



Input Gain Pot, clockwise increases, (factory set: from full CCW rotate 1/3 turn clockwise)

Settings (*some of many):

<p>Trower Vibe, Vintage</p>	<p>Little Dave!</p>	<p>Jimi Vibe with added vibrato pitch bend</p>
<p>Fast Vibe, Modern</p>	<p>Pitch Tremolo, Modern</p>	<p>Rotary Speaker, Modern</p>
<p>Pitch bend Vibrato, Vintage</p>	<p>Magnetone Vibrato, Modern</p>	<p>Heavy bass Throb Repeater</p>

Warning (Please read for your protection).

Moisture & Water concerns:

This product should NOT be used near water or moisture. Care should be taken so that this product does not fall into liquids and liquids are not spilled onto the enclosure. Do not use this product on a wet lawn, by a bathtub or sink, near a laundry basin, in a wet or damp basement, on wet cement, near a swimming pool, etc).

Power:

If using a transformer, only use the transformer that is accompanied with the unit. If excessive heat or burning smell is discovered coming from this product or the transformer, immediately unplug the transformer and the product and contact your dealer. Rout power supply cords so they are not likely to be walked on, pinched, or damaged.

Hookup & Grounding:

Precautions should be taken so that the grounding and power of this or any product are not bypassed or altered. Improper hookup or grounding of this product can cause injury or even death. If there is any question to proper installation and grounding, please contact a qualified electrician. For hookup information, please consult with a qualified dealer or electrician.

Service:

To reduce the risk of fire or electric shock, the user should not attempt to service this product, open the enclosure, or alter the product or power transformer. For any servicing requirements, please send this product and power supply to a qualified dealer.

General:

This product is heavy and should be handled with care to prevent injury. If there is any question or concern about this product or the hookup of this product, contact a qualified electrician or qualified dealer.

DLS Effects Inc., web: www.dlseffects.com ViVTrower Vibe, Vintage

Thank you for making DLS Effects part of your art and sound!

*Uni-vibe™ is a registered trademark of Dunlop Manufacturing, Inc.

www.dlseffects.com © 6/23